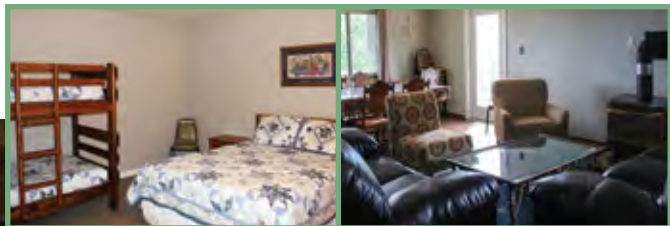


# SILVER RIDGE



Silver Ridge is a beautiful six-bedroom mountain home offering spectacular views of the Tuolumne River Valley. Ideal for adult getaways and leadership retreats, the Ridge comfortably sleeps up to 26 guests and features full-service meals. There is a conference room and separate game room for on-site recreation.

- Six Bedrooms
- Views
- Full-Service Conference Room
- Game Room
- Sleeps up to 26



# WELCOME

For over 50 years, Silver Spur Christian Camp & Retreat Center has served the year-round retreat needs of California's educational, non-profit and evangelical Christian communities. Conveniently located in the Sierra foothills near Sonora, **Silver Spur's three distinct facilities provide comfortable accommodations for groups as small as 12 and as large as 340.**



Silver Spur's desire is to partner with you and make your retreat experience as trouble-free as possible. Whether it's lodging logistics or meal details, our experienced staff is happy to provide you with planning assistance.

[silverspur.com](http://silverspur.com)

Established  
1965

# CHRISTIAN CAMP & RETREAT CENTER



- Following Hwy. 108 east from Oakdale or J59/108 from Merced
- From Jamestown, travel 4 miles east on Hwy. 108
- Take the Mono Way exit & turn right onto Mono Way. Drive 1 mile
- Turn right on Tuolumne Road E17
- Travel 4 miles and turn right onto Woodham Carne Road
- Travel 1.5 miles and turn left onto Yosemite Road
- Travel 1.4 miles and turn right at the Silver Spur sign and drive 1.2 miles into the parking lot

## Directions to Silver Spur



17301 Silver Spur Drive  
TUOLUMNE, CA 95379

Non-profit  
Organization  
U.S. Postage  
Paid  
Permit #4  
Tuolumne, CA  
95379



## RELAX



## PLAY



## GROW





Silver Creek offers rustic camping with five-star views of the Tuolumne River Valley. A favorite of youth and adult groups alike, Silver Creek features 12 cabins with lodging for up to 100 guests, a central dining/meeting room, a swimming pool, two bath houses, a picnic area and an outdoor amphitheater.

- 12 Cabins**
- Sleeps up to 100**
- Views**
- Meeting/Dining Room**
- Picnic Area**
- Outdoor Amphitheater**
- Swimming Pool**



## SILVER CREEK

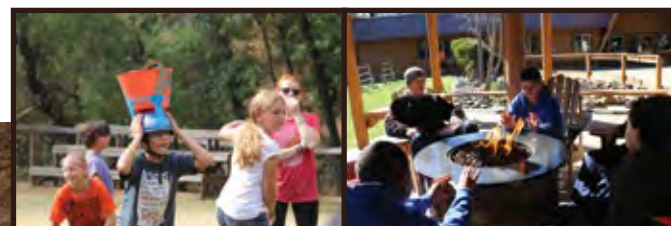
## SILVER SPUR LODGE



Silver Spur Lodge is situated on 132 gorgeous acres of oak and pine forest and is ideal for groups ranging in size from 20 to 220 guests. The Lodge has rooms that accommodate up to 6 individuals with shared restrooms in each of three wings. The Lodge's central lobby and outdoor "Shady Rest" gazebo are favorite places for guests to relax in front of a fire.

- Central Lobby**
- Sleeps 20 to 220**
- 132 Acres of Forest**
- Outdoor Amphitheater**
- Dining & Meeting Spaces**

Several conference rooms and meeting spaces are available to Lodge guests depending upon group size. The Lodge Amphitheater is also available for outdoor meetings and evening campfires.



## RECREATION

Silver Spur offers a wide variety of recreational opportunities. Hiking, carpetball, ping pong, box hockey, basketball, volleyball and horseshoes are just some of the activities available. Depending on the season, groups may schedule use of the Lodge pool, athletic field and ball courts for individual and group activities. They may also schedule use of any if not all of the following:



- Broken Arrow Hollow Archery Range
- The 450' Argonaut Zipline
- The Ole Swimmin' Hole
- Miner's Flume Water Slide
- Splatter Hill Paintball
- Gold Pan Frisbee Golf Course



## PROGRAMS

Groups and individuals may also participate in any of Silver Spur's camp-sponsored retreats for youth, men, women and couples. Silver Spur also offers program assistance to outdoor education groups through its Foothill Explorations at Silver Spur (FESS) program.



For guest group rates or to check availability:  
Call (209) 928-4248  
Email [spurcamp@silverspur.com](mailto:spurcamp@silverspur.com)